









# The Palms Estate

**P**irotti projects & properties is proposing to you a unique investment opportunity at **the palms estate**.

With guaranteed value for investment, the palms estate is a vehicle conceived and developed by **pirotti projects** to offer you a chance to own a home in a palm garden, in a one of the Abuja's most accessible locations: **dawaki district**.



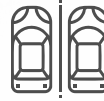
# Features



contemporary  
design



bedrooms  
all en suite



ample  
parking



sizeable  
lounge + dining



power  
generating set



Good road  
network



24/7 water  
supply



security  
services

## Payment Plan:

All Properties are available for sale starting from at least **50%** of the **initial deposit**.





Terraces

# Features

- 4 bedroom all en suite + BQ
- 3 Car parking
- Sizeable Lounge + dining
- Ante room + Visitor's toilet

- Sizeable kitchen + store
- Private family lounge
- Private backyard
- World class finishes, fixtures & fittings



**ground floor**



**first floor**



**Second floor**



# Site Progress ▴





Terrapartments



# Features

- 3 bedroom all en suite
- 2 Car parking
- Sizeable Lounge + dining
- Ante room + Visitor's toilet

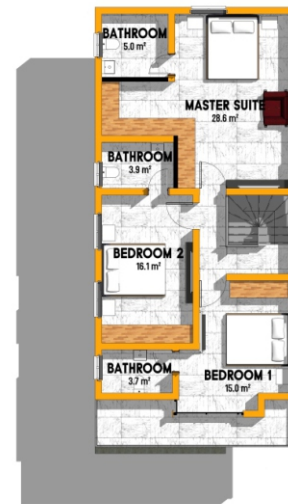
- Sizeable kitchen + store
- Private family lounge
- Private backyard
- World class finishes, fixtures & fittings



**GROUND FLOOR PLAN**



**FIRST FLOOR PLAN**



**SECOND FLOOR PLAN**

Site Progress







3 bedroom  
apartments

# Features

- Contemporary design
- 3 bedroom all en suite
- 2 Car parking
- Sizeable Lounge + dinning

- Sizeable kitchen + store
- Visitor's toilet
- Private family lounge
- Private backyard





# Site Progress





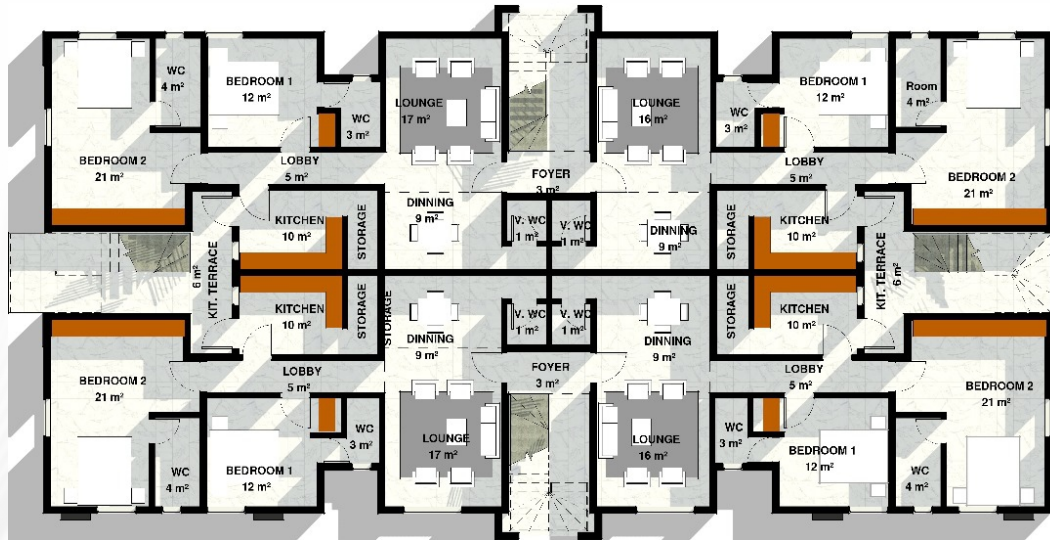
2 bedroom  
apartments



# Features

- Contemporary design
- 2 bedroom all en suite
- 1 Car parking
- Sizeable Lounge + dinning

- Sizeable kitchen + store
- Visitor's toilet
- Private family lounge
- Private backyard



# Site Progress ▴







2 & 3 bedroom  
apartments

# Features

- Contemporary design
- 2/3 bedroom all en suite
- 1 Car parking
- Sizeable Lounge + dinning

- Sizeable kitchen + store
- Visitor's toilet
- Private family lounge
- Private backyard

**TWO BEDROOM FLOOR PLAN**



**THREE BEDROOM FLOOR PLAN**







[www.pirottigroup.com](http://www.pirottigroup.com) 

08095000700 

@pirottigroup   